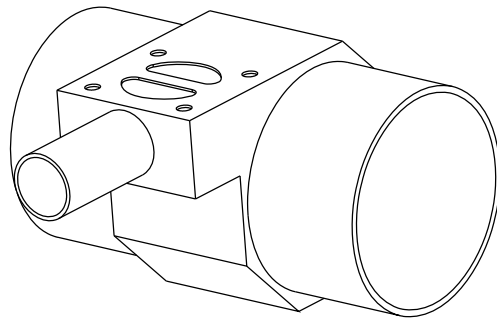
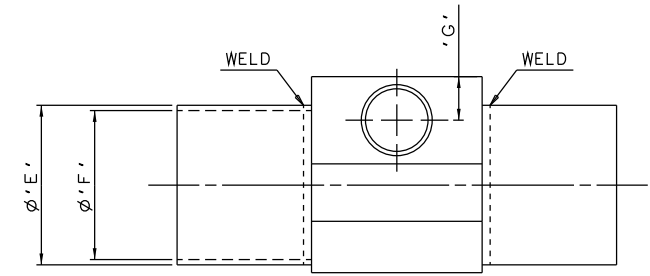
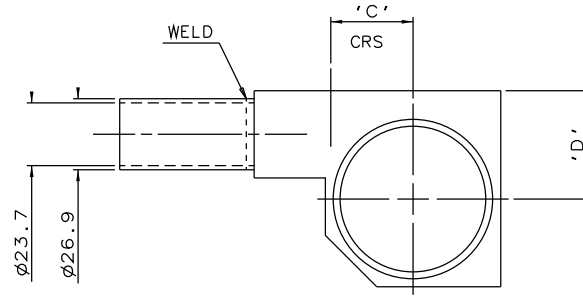
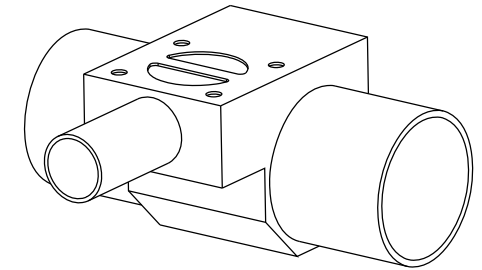
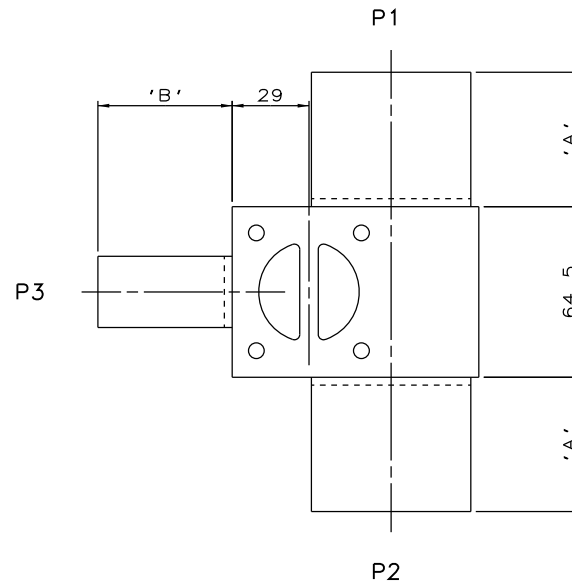


DN20 MAINLINE ONLY



DN65 TO DN100  
MAINLINE ONLY



DN25 TO DN50  
MAINLINE ONLY

The information on this sheet is Private and Confidential and is the property of Crane Process Flow Technologies Limited and must not be published directly or indirectly in any manner whatsoever without the written permission of the Company and must not be used in any way detrimental to their interests.  
© Crane Process Flow Technologies

**CRANE** Process Flow Technologies  
A Crane Co. Company

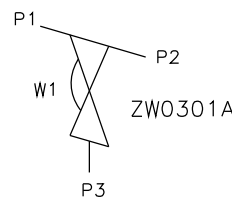
**Saunders**  
The Science Inside

Title  
SCHEDULE OF LEADING DIMENSIONS FOR DN20 WEIR  
'T' BODY WITH ISO 1127 S1 BUTT WELD ENDS

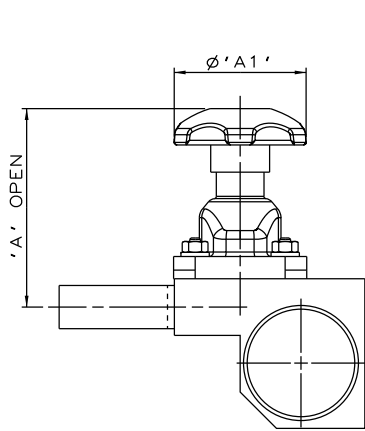
Drawn JRD Date 14.10.11 UNCONTROLLED IN  
Checked RND Date 22.03.12 HARD COPY FORMAT

First Angle Projection Method E DO NOT SCALE Drawing No. WEB-075 Issue. 2

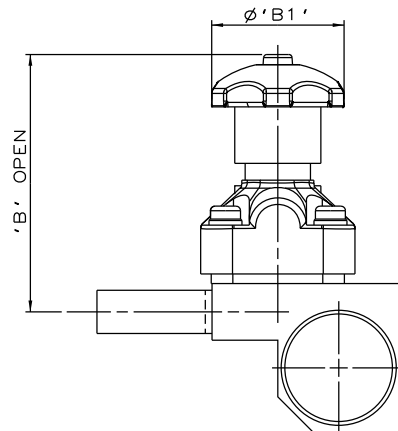
MAINLINE SIZE	A	B	C	D	øE	øF	G	BODY WEIGHT
mm	mm	mm	mm	mm	mm	mm	mm	Kgs
DN20	50.8	50.8	15.4	26.5	26.9	23.7	15.5	0.9
DN25	50.8	50.8	18.4	30.0	33.7	29.7	16.5	1.1
DN32	50.8	50.8	22.7	34.5	42.4	38.4	15.5	1.3
DN40	50.8	50.8	25.7	37.0	48.3	44.3	16.5	1.4
DN50	50.8	50.8	31.1	41.0	60.3	55.1	16.5	1.8
DN65	50.8	50.8	39.0	46.0	76.1	70.9	15.5	1.9
DN80	50.8	50.8	45.4	49.0	88.9	83.7	15.5	2.2
DN100	101.6	50.8	58.1	60.2	114.3	109.1	15.5	3.3



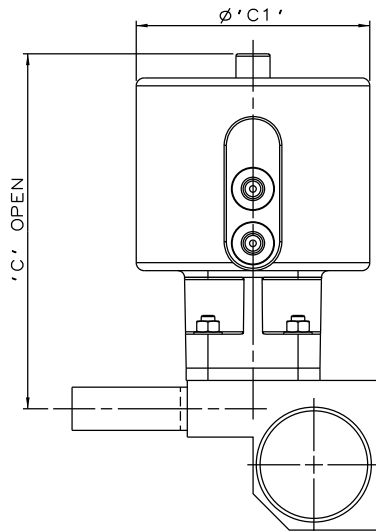
ORIENTATION AS PER  
P&ID DIAGRAM FOR  
OPTIMUM DRAINABILITY.



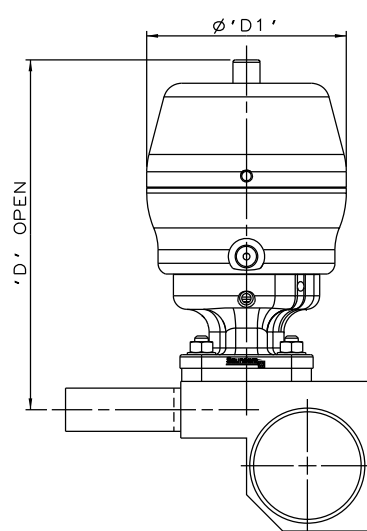
SS NON SEALED  
BONNET ASSEMBLY



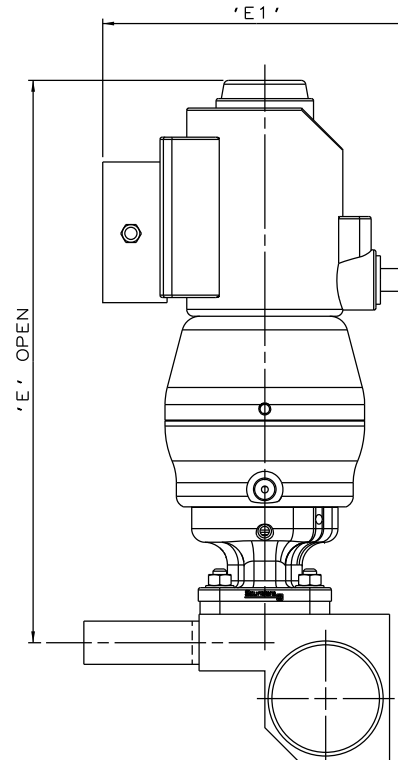
PES BONNET  
ASSEMBLY



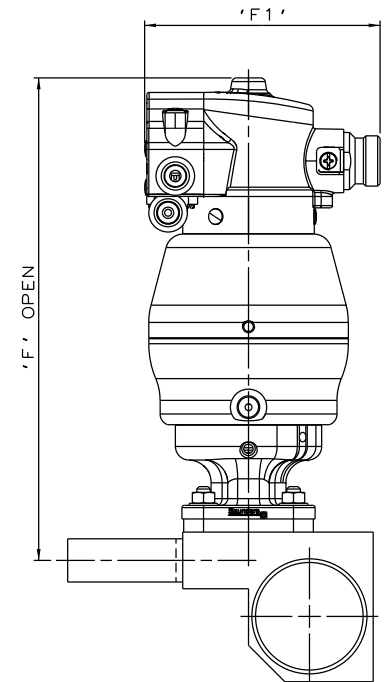
EC ACTUATOR  
(ALL MODES)



\*S360 ACTUATOR



\*S360 ACTUATOR  
WITH I-VUE SENSOR



\*S360 ACTUATOR  
WITH M-VUE SENSOR

The information on this sheet is Private and Confidential and is the property of Crane Process Flow Technologies Limited and must not be published directly or indirectly in any manner whatsoever without the written permission of the Company and must not be used in any way detrimental to their interests.  
© Crane Process Flow Technologies



Title  
SCHEDULE OF LEADING DIMENSIONS FOR DN20/0.75 WEIR  
'T' BODY (DN20/0.75 BRANCH) WITH BUTT WELD ISO 1127 S1 ENDS.  
FITTED WITH TOPWORKS OPTIONS

Drawn	R1	Date	09.05.17	UNCONTROLLED IN HARD COPY FORMAT
Checked	RND	Date	09.05.17	
First Angle Projection Method E		DO NOT SCALE	Drawing No. WEB-075-ASSY	Issue. 1

\* DIMENSIONS SHOW MAXIMUM ENVELOPE FOR ALL MODES

BRANCH SIZE	A		A1		B		B1		C		C1		D		D1		E		E1		F		F1		
	mm	inch	mm	inch	mm	inch	mm	inch	mm	inch	mm	inch	mm	inch	mm	inch	mm	inch	mm	inch	mm	inch	mm	inch	
DN20	0.75	91.5	3.60	62.0	2.44	117.5	4.63	62.0	2.44	160.5	6.32	103.0	4.05	167.5	6.59	98.0	3.87	263.5	10.37	136.0	5.35	228.5	9.00	103.8	4.09